



THE NOLAN HOME WAS DESIGNED TO FIT INTO AND COMPLEMENT THE BUILDING SITE'S NATURAL LANDSCAPE, WHICH FEATURES TALL EVERGREENS, NATIVE GRASSES, AND A STUNNING VIEW OF THE SPANISH PEAKS. CEDAR SHAKES AND COPPER ACCENTS ON THE ROOF, LOG AND TIMBER ELEMENTS, AND NATURAL STONE ACCENTS BLEND BEAUTIFULLY WITH THE SURROUNDINGS.



Big Sky Beauty

A California family finds rustic charm in a Montana retreat.

BY KAREN DOSS BOWMAN ✦ PHOTOGRAPHY BY KARL NEUMANN

ALTHOUGH TOM AND MARIANN NOLAN OWNED A VACATION LOG HOME IN Big Sky, Montana, the construction of a new log and timber home taking place nearby several years ago captured their imaginations. With a style reminiscent of the architecture found in Yellowstone National Park, Bear Basin Ranch seemed the perfect retreat.

"We visited Bear Basin often during the building stage, and we were impressed with the quality and the architecture," says Tom Nolan, whose primary home is in California. "It was a pretty special place in a beautiful setting."



THOUGH EXPANSIVE, THE GREAT ROOM IS DIVIDED INTO SMALL NOOKS WHERE FAMILY MEMBERS AND GUESTS CAN BREAK INTO SEPARATE ACTIVITIES AND CONVERSATIONS.

The couple soon learned that Bear Basin Ranch was being built on speculation by Montana investor and developer Bob Olson, who set out to create an exquisite home of unmatched quality and style that would appeal to just the right buyer. The Nolans decided to purchase the home, and it became theirs in January 2008.

Situated at 6,500 feet above sea level, the home is tucked into a four-acre site in Bear Basin featuring dramatic views of the surrounding Spanish Peaks mountain range. With nearly 6,000 livable square feet, the home is tucked into the natural landscape, showcasing beautiful evergreens, native grasses, and a backyard drop-off to a stream, which is a finger of the Gallatin River.

"You have the advantage of listening to the river at night, and the beautiful environment that's found in Big Sky," Tom says. "Whether or not it's a throwback to playing with Lincoln Logs as a young boy, this certainly was a dream come true for us."

Produced by Durfeld Log and Timber in British Columbia and built by Beartooth Builders of Livingston, Montana, the Nolan home is a log and timber hybrid system constructed out of cedar logs. Heavy sand chinking between rows of thick log planks complements the home's massive timbers and enhances its rustic charm, explains architect Jamie Daugaard of Centre Sky Architecture, who designed the home.

Following Olson's vision, Daugaard set out to achieve the architectural style of a mountain lodge and the effect of a ranch cabin reminiscent of



THE GREAT ROOM FIREPLACE, MADE OUT OF STACKED NATURAL STONE AND FEATURING A HAND-FORGED IRON SCREEN, IS A FOCAL POINT OF THE MAIN LIVING LEVEL, PROVIDING AN INVITING SPOT FOR THE HOMEOWNERS TO ENTERTAIN GUESTS OR RELAX ON COLD WINTER EVENINGS. THE CUSTOM-DESIGNED POOL TABLE, BY DRAWKNIFE BILLIARDS IN TETONIA, IDAHO, PROVIDES A RELAXING SPACE WITH AN OPTIMAL VIEW OF THE OUTDOORS THROUGH THE WALL OF WINDOWS. A ROW OF CLERESTORY WINDOWS ABOVE ALLOWS IN ADDITIONAL NATURAL LIGHT.



THOUGH THE DINING ROOM FLOWS INTO BEAR BASIN RANCH'S OPEN FLOORPLAN, THE SPACE WAS FLANKED WITH LARGE LOG COLUMNS TO CREATE A SNUG ALCOVE WHERE THE FAMILY CAN GATHER AROUND THE HAND-CARVED DINING ROOM TABLE, FEATURING AN ORNATE PINECONE SUPPORT, AFTER A BUSY DAY.

America's national parks, particularly nearby Yellowstone. He designed ceiling lines slightly lower than one might find in most log homes, for example, while keeping a height that would expose the beauty of the roof's thick beams and trusses. Clerestory windows in the great room allow the warmth of natural light to extend into the interior spaces. Cedar shake roofing with copper accents tops off a look that blends into the home's surroundings.

"We based the design on the national parks aesthetic but with a cleaner application on materials," says Daugaard.

The expansive great room, connected to an open kitchen and dining room, is stunning and inviting with massive flared-butt log columns under open beams. Just off this area, the Nolan family and their guests can enjoy privacy in the den or media room while remaining close to the center of activity.

"The open floorplan is really unparalleled," says Nolan. "When we bring anybody through, it's quite inviting as you walk into the home with almost the entire first floor exposed to open beams and very significantly sized logs."

A key selling point for the Nolans were the lavish interior design specifications pulled together by interior designer Lisa Marie

Odegard of Lisa Marie Design, Inc., in Big Sky, Montana. Odegard carefully planned every interior feature—from cabinetry, tiles, and windows to lighting, paint finishes, furniture, and original artwork—envisioning a style she calls "Rocky Mountain elegance." The result: a look that will remain fresh and inviting for years to come.

"Rocky Mountain elegance is not something that's trendy," Odegard says. "It's a style that will hold its own over time."

A blend of unusual and beautiful finishes, such as stone fireplaces that stretch from floor to ceiling and wire-brushed cedar doors and windows, add character and warmth. Every space of the home is accented with one-of-a-kind furniture, finishes, and accessories, such as hand-forged iron door handles, fireplace screens, and hand railings. And each decorative and functional piece, from light fixtures to furnishings, was customized to fit the space. A mix of rich, jewel-toned colors pulls in elements of the home's stunning outdoor setting.

"I tried to incorporate the textures and colors found in every season in nature and bring those into the home so it feels warm and inviting all year long," Odegard says.

Carefully planned outdoor spaces extend

DESIGN tip

FOR HOMES LOCATED IN COOLER CLIMATES, CONSIDER INCORPORATING A WARM PALETTE OF COLORS THROUGHOUT THE INTERIOR TO CREATE A COZY AND INVITING ATMOSPHERE.



YOU DON'T HAVE TO BE A COOK TO LOVE THIS KITCHEN. BOTH BEAUTIFUL AND FUNCTIONAL, THIS SPACE FEATURES CUSTOM CABINETRY AND A SPACIOUS ISLAND CONSTRUCTED OUT OF HAND-HEWN ANTIQUE SPANISH OAK BY MOUNTAIN HIGH WOODWORKS IN BOZEMAN, MONTANA. THE CABINETS WERE PAINTED ANTIQUE WHITE WITH AN ASH WASH FINISH TO ADD BALANCE TO THE BACKDROP OF PREDOMINANTLY DARK WOOD TONES. THE FRENCH DOORS AND WIRE-BRUSHED CEDAR WINDOWS, CUSTOM-DESIGNED BY MONTANA SASH AND DOOR IN BOZEMAN, MONTANA, LEAD OUT TO THE PATIO AND OUTDOOR GRILL AREA, CONNECTING THE INSIDE OF THE HOME TO ITS BEAUTIFUL MOUNTAIN SURROUNDINGS.

BELOW: ELEGANT FINISHES AND ACCESSORIES IN EARTH TONES IN THE MASTER BATHROOM BLEND TO CREATE THE PERFECT AT-HOME RETREAT. THE TUB SURROUND AND FIREPLACE, CONSTRUCTED OUT OF STACKED NATURAL STONE, ENHANCE THE HOME'S RUSTIC QUALITIES WITHOUT BEING TOO MASCULINE.

RIGHT: IN THE MASTER BEDROOM, A NATURAL STONE FIREPLACE THAT STRETCHES FROM FLOOR TO CEILING CREATES A WARM, SECLUDED ENVIRONMENT FOR THE HOMEOWNERS. THE FIREPLACE ALSO OPENS TO THE MASTER BATHROOM. THIS SPACE IS FILLED WITH INTRICATE, CUSTOM-DESIGNED FEATURES, INCLUDING A HAND-FORGED IRON CHANDELIER. LISA MARIE ODEGARD SELECTED A VARIETY OF TEXTURES AND JEWEL-TONED COLORS TO CREATE AN INVITING CONTRAST TO THE DARK HUES OF THE WOOD AND STONE.



the home's living space for the family's enjoyment. Covered and uncovered patio spaces, a commercial-sized barbeque, and seating areas overlooking the stream on the property provide gathering areas where the family can entertain guests or relax quietly in the peaceful mountain setting.

Though the Nolans weren't involved in the planning and building stages of Bear Basin Ranch, they have been impressed with the quality of their new log home. They recommend that prospective log home owners do careful research and select the finest materials possible to match the conditions of the area in which the home will be built.

"The quality of the builder is paramount because of unique settling issues [of log homes] and the extreme

weather conditions to which these homes are often exposed," Nolan says. "These conditions require a considerable amount of time and attention to sealing the home. And it's important to consider the quality of the wood, the age of the wood, and how the wood was prepared."

Thanks to developer Olson's vision, the Nolans found the perfect getaway, which they hope to enjoy for years to come.

"We go up to Montana as often as we can to get away from the pressures of work and living in California," says Nolan. "It gives such a sense of serenity unlike any other place I've ever known. We often take vacations abroad, but even then, I've often thought that I'd rather be sitting in the backyard of my Montana home." ❄

BUILDINGtip

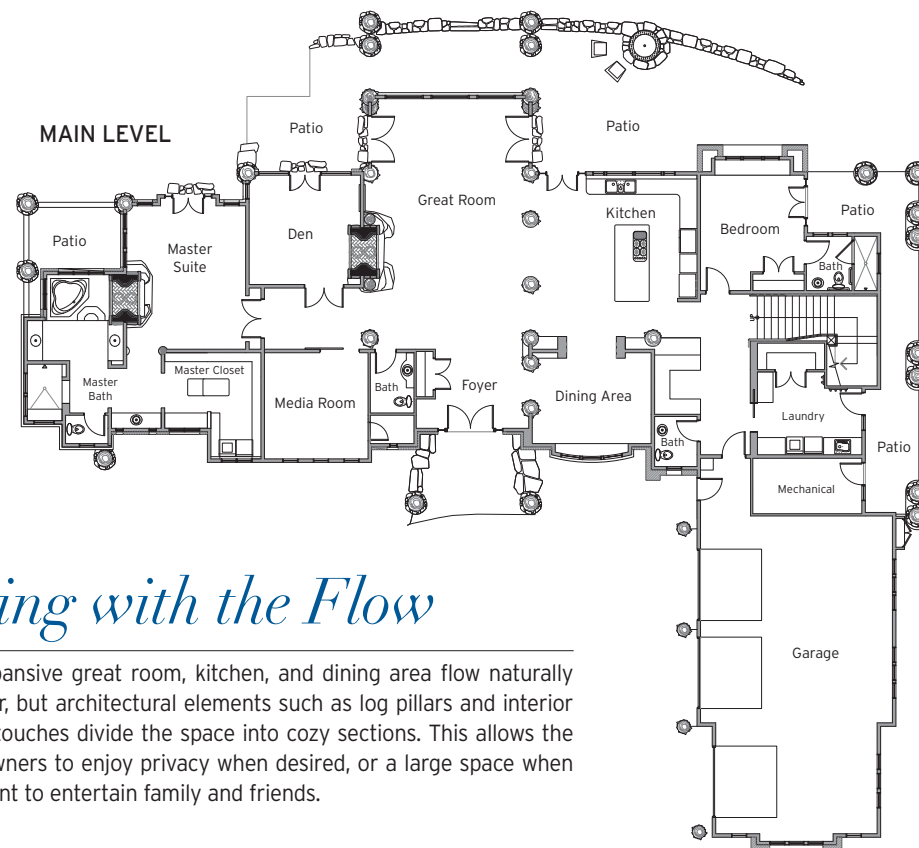
TAKE ADVANTAGE OF THE BUILDING SITE'S BEAUTY BY DESIGNING A STRUCTURE THAT FITS IN NATURALLY INTO THE TOPOGRAPHICAL FEATURES. FOR COOLER CLIMATES, ORIENT THE STRUCTURE TO THE TRUE SOUTH TO TAKE ADVANTAGE OF THE PASSIVE SOLAR HEATING PROPERTIES.



Log Producer: Durfeld Log and Timber, British Columbia
Design: Centre Sky Architecture, Big Sky and Whitefish, Montana & Denver, Colorado
Interior Design: Lisa Marie Design, Big Sky, Montana
Builder: Beartooth Builders, Livingston, Montana

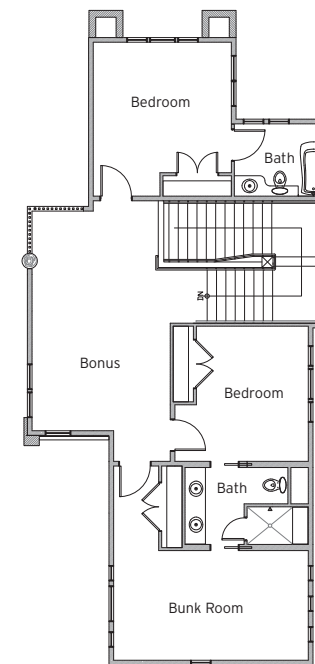
Two-story home ❄ Square Footage: 5,077
Bedrooms: 4 Baths: 4 (full)

A BUNK ROOM ON THE UPPER LEVEL PROVIDES ADDITIONAL SLEEPING SPACES WHEN THE HOMEOWNERS HOST EXTRA GUESTS.



Going with the Flow

The expansive great room, kitchen, and dining area flow naturally together, but architectural elements such as log pillars and interior design touches divide the space into cozy sections. This allows the homeowners to enjoy privacy when desired, or a large space when they want to entertain family and friends.



DOUBLE DOORS CONSTRUCTED OUT OF SPANISH OAK SEPARATE THE MASTER SUITE FROM THE REST OF THE HOUSE, PROVIDING ADDED SOLITUDE FOR THE HOMEOWNERS AND ACCESS TO A PRIVATE PATIO SPACE.

EACH GUEST BEDROOM HAS AN ATTACHED BATHROOM TO GIVE VISITORS A SENSE OF PRIVACY WHEN THEY RETREAT FOR THE EVENING.